

AETHER Care and Evacuation Manikin

Item no.: T3C





SMAT AETHER is based on the proven **Combat Carl** concept, originally developed in close cooperation with the German Armed Forces and specialised units. Through the collaboration between **Erlor-Zimmer** and **SMAT**, **AETHER** has been adapted to meet the specific requirements of **SMAT's TCCC, TECC** and hostile environment training programmes. Robust, flexible and highly realistic, **AETHER** is ideal for professional training in both civilian and military sectors.



Providing medical care on the battlefield or in a hostile environment presents challenges far beyond those of a standard emergency. From initial treatment under threat to casualty extraction and onward transfer to a medical facility, **SMAT AETHER** enables the full **MARCH** algorithm to be trained in realistic tactical scenarios.

MARCH

M Massive bleeding Control

Three supplied deep wounds can be applied at 7 points and connected to bleeding modules. Wound packing is possible for all wounds, as is the application of tourniquets.

A Airway

Airway management with oro- and nasopharyngeal as well as supraglottic devices

R Respiration

Thoracic decompression according to Monaldi and Bülow

C Circulation

Haemostasis and access to the vascular system: i.v. in the forearm, i.o. sternal, humeral head and proximal tibia with reusable pads

H Hypothermia / Head Injuries

Interchangeable eyes with normal, dilated and constricted pupils

Although tactical procedures may vary according to the threat, environment or mission profile, the core principles of casualty care remain unchanged. **SMAT AETHER** can be equipped with optional amputation stump limbs and realistic wound moulages to increase training realism.



First phase „Care Under Fire“

During the **first phase, Care Under Fire**, the objective is to encourage the wounded person to perform self-aid as quickly as possible, whenever possible, despite ongoing hostilities or an active threat. The priority is to move the casualty to a safer area, away from immediate danger, before providing further care. Nearly 18% of preventable fatalities may be avoided when care is delivered by specially trained first responders within the first ten minutes, commonly referred to as the **Platinum Ten Minutes**.



For this reason, great importance is placed on **self-aid and buddy-aid**, enabling responders to provide **initial lifesaving care under tactical conditions**. Simple haemostatic procedures for gunshot wounds can be trained using **self-adhesive, highly realistic wound moulages** and treated with a **tourniquet**, thereby increasing the casualty's chances of survival. Applying a tourniquet to the extremities helps prevent massive blood loss and death from **haemorrhage**. SMAT AETHER is also ideal for training with the **haemorrhage module**, which can be controlled via an **app**.

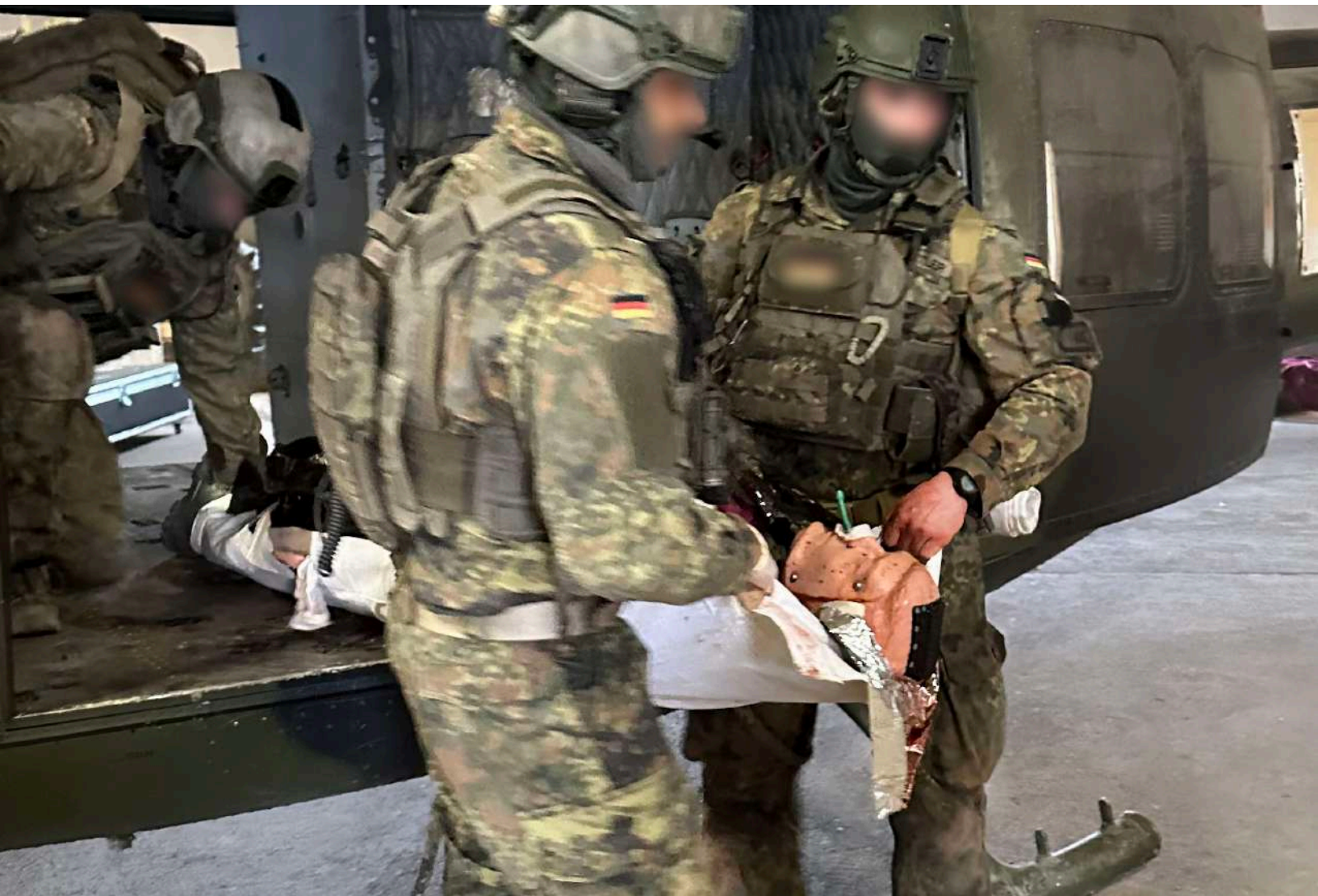


Second phase „Tactical Field Care“

In the second phase, “**Tactical Field Care**”, a standardised assessment based on the **MARCH algorithm** can be performed once the casualty is no longer under direct threat.

This assessment is repeated continuously and is followed by the third and final phase, “**Tactical Evacuation Care**”. This phase includes the preparation and execution of **qualified tactical casualty evacuation** to an appropriate medical facility. Depending on the operational situation, different means of transport may be used, such as a **rescue helicopter equipped for advanced medical care or armoured ground transport vehicles**.

The fundamental aim of **TCCC – Tactical Combat Casualty Care** is to follow operationally defined timelines. After initial lifesaving care during the “**Platinum Ten Minutes**”, the casualty should be evacuated from the danger area within the “**Golden Hour**”. Further surgical treatment can then be carried out in a controlled and sterile medical environment.



Specifications:

- Weight: approx. **65kg to 85kg**
- Realistic height: **175cm**
- Robust PVC material
- Ideal for outdoor use in extreme conditions (sand, rain, mud, etc.)
- Wound inserts incl. universal haemorrhage module at 7 points for changing
- Flexible extremities for different carrying techniques
- No sensitive electronics
- Made in Germany
- cABCDE algorithm compliant
- XABCDE algorithm compliant
- MARCH algorithm compliant
- Voice module via Bluetooth (waterproof up to 1 metre according to IPX7)
- Interchangeable eyes, 3 pairs, normal, dilated, constricted
- Airway protection, oropharyngeal and nasopharyngeal
- Wound management 7 positions for wound modules
- Stab wound, bullet wound, bullet hole wound, blind covers
- Wounds have a bleeding function
- haemorrhage module with manual or automatic app control
- Tourniquet system
- Dressing techniques / support and wound dressing
- Intraosseous access tibia
- Intraosseous access humerus
- Intraosseous access sternum
- Thoracic decompression according to Monaldi
- Thoracic decompression according to Bülau
- Intravenous injection
- Peripheral venipuncture

- Thorax relief Monaldi
- Thorax relief Bülau IV
- access possibility

- I.O Access FAST
- I.O Access
- Exchangeable eyes with normal, constricted or dilated pupil



- Voice output via loudspeaker in the head by means of sound files or via microphone function
- Airway management oro - and nasopharyngeal

- Openings for wounds, IM puncture pads and blind covers
- Robust and insensitive to water, dirt and other adverse environmental conditions



*Airway management
nasopharyngeal*



*Airway management
supraglottic*



Patient voice



Exchangeable eyes



*Wounds in the
thoracic region*



*Relief puncture according
to Monaldi*



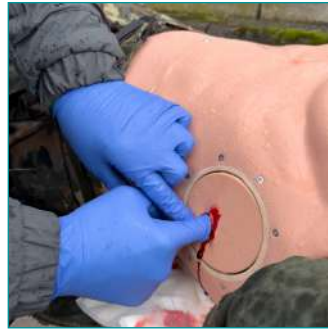
*Sternal intraosseous
approach*



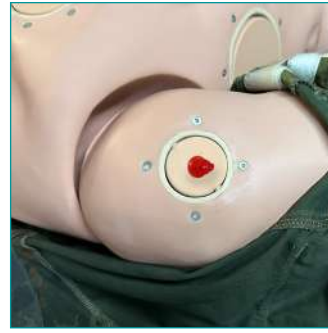
Wound-Packing



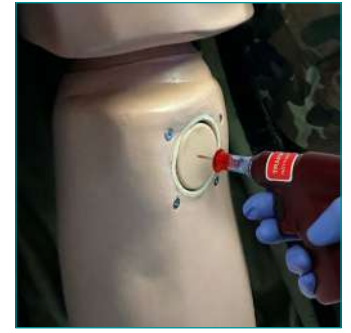
i.V. access



Chest drainage



*IO access
Humerus*



*IO access
Tibia*



TQ - placememt



Amputation stump leg



Bandaging techniques



Carrying techniques

Additional accessories



This new series of extremely realistic moulages show typical injuries. The injuries are already painted. For an even more realistic look artificial blood can be added. Instead of time consuming Make-up the moulages will be immediately ready for use. Use your valuable time for training, not for Make-Up.

All wounds are delivered in transport boxes.
Manufactured in Germany.

Wound moulage bullet wound arm, big Item no. NW104

with bleeding function



Wound moulage bullet entrance hole Item no. NW10A



Wound moulage bullet hole leg, big Item no. NW105

with bleeding function



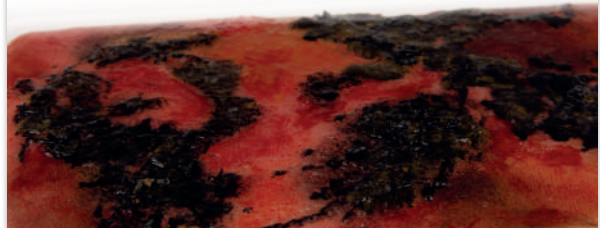
Wound moulage bullet exit hole Item no. NW10B



Wound moulage 2nd degree burn Item no. NW007



Wound moulage 3rd degree burn Item no. NW008



Wound moulage 2nd degree burn, big Item no. NW106



Wound moulage 3rd degree burn, big Item no. NW107





Wound moulage cut, big

Item no. NW100

with bleeding function



Bleeding Function

The large wounds have a bleeding function. An incorporated, invisible tube allows the wound to bleed realistically. The tube is connected to an infusion bag, which can be filled with artificial blood. Bleeding from the wound can be controlled by the simulated casualty or by a third person.

Wound moulage open fracture leg, big

Item no. NW103

with bleeding function



Wound moulage open fracture arm, big

Item no. NW102

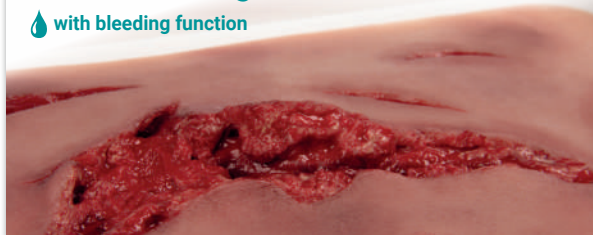
with bleeding function



Wound moulage laceration, big

Item no. NW101

with bleeding function



Wound moulage
„human bite“

Item no. NW005



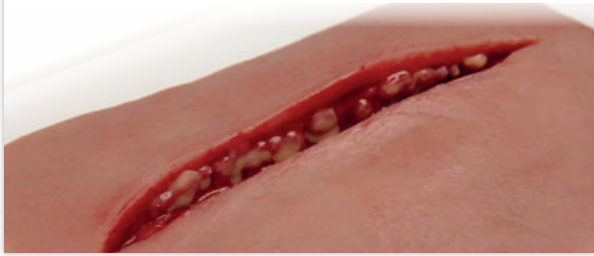
Wound moulage
„open fracture“

Item no. NW004



Wound moulage „cut“

Item no. NW002



Wound moulage cut
broken bottle

Item no. NW009



Wound moulage
„laceration“

Item no. NW003



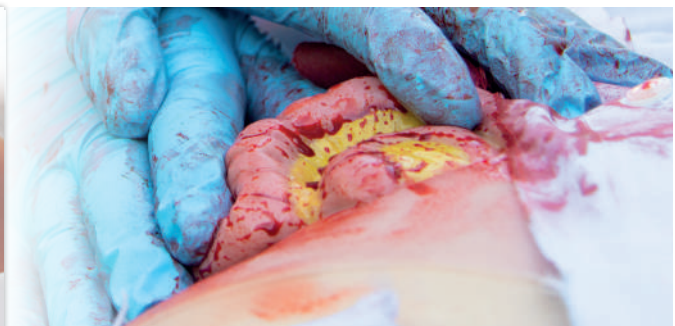
Wound moulage
protruding of large
intestines

Item no. NW109



Wound moulage
protruding small
intestines

Item no. NW111



Wound moulage
stab wound

Item no. NW115

with bleeding function



Wound moulage
hematoma fresh

Item no. NW117



Wound moulage
Hematoma older

Item no. NW119



Wound
moulage 1st
degree burn

Item no. NW120



Wound moulage
Severe wrist laceration

Item no. NW121

with bleeding function



Wound moulage
Throat Cut

Item no. NW125

with bleeding function

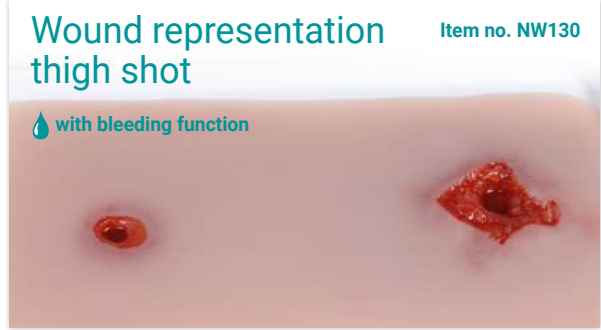


Wound moulage
stab wound neck

Item no. NW126

with bleeding function





Wound moulage stab groin, Wound Packing

This moulage is made of silicone and shows a stab wound in the groin area. The stab wound is so deep that wound packing can be practiced with appropriate materials. The moulage is self-adhesive to dolls or human skin. The moulage has a supply line with connection for the bleeding system. It can also be applied with moulage adhesive, but the moulage permanently loses its self-adhesive properties if the adhesive is used. All wounds are packed in plastic boxes to ensure safe storage.

Item no. NW150

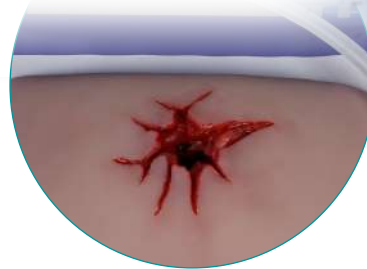


Wound Moulage Shot Groin, Wound Packing

This moulage is made of silicone and shows a gunshot wound in the groin area. The gunshot wound is so deep that wound packing can be practiced with appropriate materials. The moulage is self-adhesive to dolls or human skin. The moulage has

a supply line with connection for the bleeding system. It can also be applied with moulage adhesive, but the moulage permanently loses its self-adhesive properties if the adhesive is used. All wounds are packed in plastic boxes to ensure safe storage.

Item no. NW160



Wound Packing Trainer

This affordable and realistic Wound Packing Simulator is ideal for emergency training and the simulation patient program. Shown is a realistic bullet wound with bleeding function caused by a large gun caliber, ideal for training the Wound Packing procedure. The Simulator is made of a high quality and very durable silicone that simulates human skin and tissue. Common hemostatic wound pads can be used. We recommend to use our washable, non-staining artificial blood (Ref.no. 7024) with the simulator. The trainer is fast and easy to clean after use. The package contains: Wound Packing Simulator (Item no. 7770), 250 ml artificial blood (Item no. 7024), Bottle for fake blood (Item no. 7770-1), Tube 80 cm (Item no. 7770-2), Plastic tray (Item no. 7770-3).

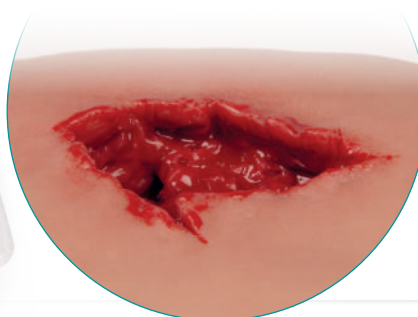
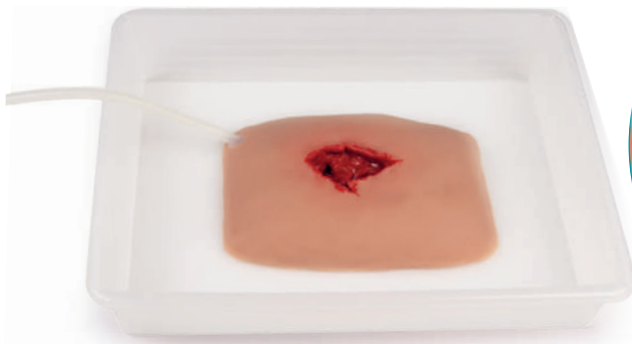
Item no. 7770



Wound moulage wound packing

This moulage shows a large wound with severe bleeding for training of wound packing. With line for bleeding function. The moulage adheres to skin or a manikin. For longer training or improved adherence an optional glue is available. Supplied with storage box.

Item no. NW110





Bloody M.A.R.C Blood pumping system with Reservoir - Backpack

The Bloody Mobile Automated Remotely Circuit blood supply module fits perfectly to our wound moulages with bleeding function. The reservoir backpack holds up to 3 liters of artificial blood which can be pumped into up to 4 wounds simultaneously. Because of the backpack design the blood supply is not obvious to see and integrates perfectly into your training scenario. The reservoir bag has an extra big opening to allow easy emptying and cleaning.

Manual version
Item no. NW900

Bloody M.A.R.C Blood pumping system with Reservoir - Backpack

The Bloody Mobile Automated Remotely Circuit blood supply module fits perfectly with our bleeding wounds. The reservoir backpack holds up to 3 liters of artificial blood, which can be pumped into up to 4 wounds at the same time using an electronic pump. The pump is operated by a battery pack and controlled in strength and pulse rate via Bluetooth remote control. Due to the backpack design, the blood supply is not noticeable and integrates perfectly into the training scenario. The reservoir bag has an extra large opening so that you can quickly and easily remove the blood and rinse the bag after the exercise.

Product features:

- practical backpack design
- wireless and mobile
- Strong battery pack for long operating times
- Wireless remote control via bluetooth
- easy handling, easy to clean

With electronic pump and remote control
Item no. NW950



Portable device for hemorrhage visualization

The bleeding device consists of a pump module with three connections, which can be controlled wirelessly using the cell phone supplied (only used as a control unit). The three connections can bleed either arterially or venously and the amount of bleeding is adjustable. The pump has a sensor system which stops the pump when the line is closed (e.g. during wound packing) to prevent damage. The pump module has a built-in battery, which allows between 2 and 20 hours of exercise depending on the load. The rechargeable battery can be replaced by a layperson and is a standardized battery, a charger is included. The pump module is integrated in a backpack with a hydration bladder for blood supply, but can also be removed and used outside.

Item no. NW500



Artificial blood, 2L

Canister with artificial blood, suitable for bleeding device.

Item no. NW599



Blood-colored fluid, 250ml

Blood-colored fluid, 250 ml. For use with injection training arms or for wound simulation.

Item no. 7024



Make-up blood for realistic accident simulation, 250 ml

The EZ make-up blood with high viscosity in liquid form is ideal for realistic accident simulation.

Item no. 7025



Blood powder for 1000 ml fake blood

The EZ blood powder is supplied in a high-quality bottle, by adding water you get 1000ml of fake blood.

Item no. 7026



Skin Glue

for extreme hold of the moulages. 225 g Tube.

Item no. 7700



Artificial glass for splinter simulation

to simulate shattered glass

Item no. NW200



OFFICIAL DISTRIBUTOR

S.M.A.T.
Special Medics And Tactics

S.M.A.T. (SPECIAL MEDICS AND TACTICS) LTD
12A Lower Main Street, Office 2 K78 X5P8, Dublin, Ireland

Phone: (+32) 491 33 64 69
E-Mail: manager@smattraining.com

Availability: Monday–Friday
www.smattraining.com